

Combi steamer Silversteam-K 10110D



Description

Thanks to the lengthwise shelves, the Silversteam-K 10110D is particularly compact, so perfect for even the smallest of kitchens. With intuitive digital controls, a rack control function and good air circulation, it can be used to steam, poach or bake foods in 1/1 GN containers.

Features

- Power load: 13.8 kW | 400 V | 50/60 Hz
- Equipment connection: 3 NAC
- Material cooking chamber: CNS 18/10
- Format drawers: 1/1 GN
- Type of drawers: Longitudinal
- Number of drawers: 10
- Distance between trays: 60 mm
- Functions: Circulating air
Steam
Combi-steaming
Low temperature cooking
Delta-T cooking
Reversing motor direction (fan wheels)
Steam production by means of direct injection
Cooldown during cooking phase



- ▶ Up to 10 x 1/1 GN
- ▶ Electronic control with 600 programs, each program with up to 9 cooking phases



- ▶ Rack control
 - ✓ To enable the selection of a program for each shelf
- ▶ Cooldown during cooking phase



- ▶ Double door glazing, inner door can be opened easily for cleaning
- ▶ Vapour extractor is easy to regulate



- ▶ Removable support rails
- ▶ 3 air speed settings

▶ Continue on the next page

Combi steamer Silversteam-K 10110D



- Cooking mode: Manual
 - One-touch recipe selection
 - Recipe tuner
- Rack control: Yes
- With cleaning system: No
- Number of cooking programs: 300 pre-installed programs
300 configurable programs
- Number of cooking phases: 9
- Temperature range: 50 °C to 300 °C
- Temperature control: Stepless
- Number of fans: 2
- Fan speed: 3 levels
- Time adjustment: 0 to 599 minutes
- Continuous operation: Yes
- Core temperature sensor connection: Below cooking chamber
- USB connection: Frontal
- Vapour extractor: Yes
- Water connection: 3/4"
- Interior lighting: Yes
- LED display: Steaming
Delta-T cooking
Cooking phases
Core temperature
Fan speed
Program
Temperature
Time
Touch
- Control unit: -
- Control lamp: -
- Series: Silversteam-K
- Operating mode: Electro
- Properties: Rounded cooking chamber
Bearing rails can be detached
Double-winged door pane
LED lighting in door
- Including: 1 grid 1/1 GN
1 tray 1/1 GN
1 PVC drainpipe
1 replacement air filter
1 water supply hose
- Available on request: Combi steamer with door hinge on left
- Material: CNS 18/10
- Important information: From a water hardness of 5° dH upwards, we urgently recommend fitting a suitable water softener and a water pressure of maximum 3 bar
- Size: W 555 x D 880 x H 1,000 mm
- Weight: 90.2 kg

Combi steamer Silversteam-K 10110D

Add on Products

GN-container, 1/1GN,D20, Basic Line

CNS



- Content: 3.4 litre(s)
- Stackable: Yes
- Design: No perforation
- Reinforced edge: No
- Surface: Silk matt
- Depth container: 20 mm
- Series: Basic Line

Code-No. 711020
GTIN 4015613695556

GN-container, 1/1GN,D65, Basic Line

CNS



- Content: 9 litre(s)
- Stackable: Yes
- Design: No perforation
- Reinforced edge: No
- Surface: Silk matt
- Depth container: 65 mm
- Series: Basic Line

Code-No. 711065
GTIN 4015613695587

GN-container, 1/1GN,D100, Basic Line

CNS



- Content: 14 litre(s)
- Stackable: Yes
- Design: No perforation
- Reinforced edge: No
- Surface: Silk matt
- Depth container: 100 mm
- Series: Basic Line

Code-No. 711100
GTIN 4015613695594

GN container, 1/1, D20

CNS
18/10



- Content: 3.4 litre(s)
- Stackable: Yes
- Design: No perforation
- Reinforced edge: No
- Properties: -
- Surface: High-gloss
- Depth container: 20 mm

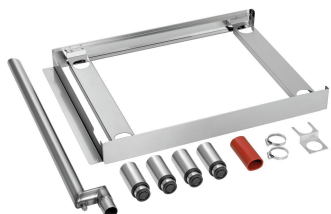
Code-No. A121025
GTIN 4016098166722

Combi steamer Silversteam-K 10110D

Add on Products

Connection kit Silversteam-K

STAINLESS STEEL



- Designed for: Electric 1/1 GN combi-steamers from the Silversteam series-K and Bartscher Kompakt
- Combination possibilities: 6 x 1/1 GN to 6 x 1/1 GN
6 x 1/1 GN to 10 x 1/1 GN
- Size frame: W 525 x D 735 x H 75 mm

Code-No. 117100
GTIN 4015613632452

Hand shower f. combi steamer



- Water connection: 1/2"
- Length hose: 2 m
- Properties: Shutoff valve for fixed connection to water supply 1/2"
- Including: 1 holder
- Material: Plastic
Metal

Code-No. 116005
GTIN 4015613587189

Pressure regulator



- Water pressure: 1 - 6 bar (preset to 3 bar)
- Connection: 3/4"
- Operating temperature max.: 65 °C
- Incoming pressure max.: 16 bar
- Material: Brass
Chrome-plated
- Important information: -

Code-No. 533051
GTIN 4015613468617

Condensation hood Silversteam-K



STAINLESS STEEL



- Fan regulation: Automatisch, sensor-controlled
- Material filter: Stainless steel
- Lamps (number + watt): -
- Including: Drain hose, 320 mm
- Properties: -
- Assembly type: Top of appliance
- Available on request: -

Code-No. 117002
GTIN 4015613671031

Combi steamer Silversteam-K 10110D

Add on Products

GN container, 1/1, D65

CNS
18/10



- Content: 9 litre(s)
- Stackable: Yes
- Design: No perforation
- Reinforced edge: No
- Properties: -
- Surface: High-gloss
- Depth container: 65 mm

Code-No. A121065
GTIN 4016098162755

GN container, 1/1, D100

CNS
18/10



- Content: 14 litre(s)
- Stackable: Yes
- Design: No perforation
- Reinforced edge: No
- Properties: -
- Surface: High-gloss
- Depth container: 100 mm

Code-No. A121100
GTIN 4016098162762

Base unit Silversteam-K

CNS



- Number of drawers: 5
- Format drawers: 1/1 GN
- Type of drawers: Longitudinal
- Height adjustable: 735 mm to 780 mm
- Colour: Silver
- Designed for: 1/1 GN combi-steamers Silversteam-K series
- Base shelf: No

Code-No. 115076
GTIN 4015613627090

Baking tray 1/1-AL



- Gastronorm: 1/1 GN
- Perforation: No
- Material thickness: 1.5 mm
- Edge: 4 sides, cover
- Silicone coating: No
- Temperature resistant to: 260 °C
- Material: Aluminium

Code-No. 100426
GTIN 4015613734743

Combi steamer Silversteam-K 10110D

Add on Products

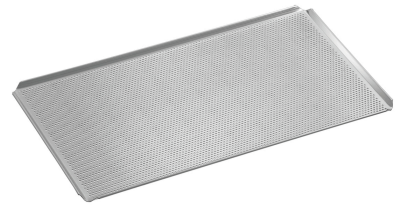
Core temperature sensor set 3KA



- Set comprises: 1 holder
1 core temperature sensor
- Designed for: Electric combi-steamers from the Silversteam series-K
- Material temperature sensor: Chrome-nickel steel
- Puncture depth: 80 mm
- Diameter temperature sensor: 3 mm

Code-No. 116111
GTIN 4015613818047

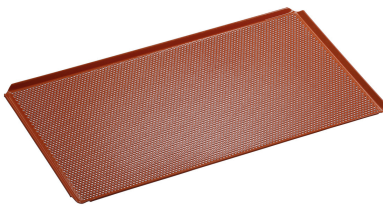
Perforated tray 1/1-AL



- Diameter perforation: 3 mm
- Gastronorm: 1/1 GN
- Perforation: Yes
- Material thickness: 1.5 mm
- Edge: 4 sides, cover
- Silicone coating: No
- Temperature resistant to: 260 °C

Code-No. 100427
GTIN 4015613734750

Perforated tray 1/1-SI



- Diameter perforation: 3 mm
- Gastronorm: 1/1 GN
- Perforation: Yes
- Material thickness: 1.5 mm
- Edge: 4 sides, cover
- Silicone coating: Yes
- Temperature resistant to: 260 °C

Code-No. 100428
GTIN 4015613734767

Power cleaner F1L



- Order quantity unit: 1 box (6 bottles)
- Designed for: Manual cleaning of heavily soiled surfaces
Grill, oven and combi steamer cleaning (without cleaning system)
Cookers, extractor hoods, tilting frying pans etc.
- Content: 6 x 1 litre

Code-No. 173278
GTIN 401561373346

Combi steamer Silversteam-K 10110D

Add on Products

Intensive power cleaner F1L



- Order quantity unit: 1 box (6 bottles)

Code-No. 173280
GTIN 4015613773353

Smoker-Box 1160



- Model: With heating coil
- Designed for: Combined steamer
- Comprising: Mains adapter
Smoker-Box
- Volume: 1.16 litre(s)
- Dimensions Smoker-Box: W 125 x D 470 x H 75 mm
- Suitable fuel: Standard smoker materials

Code-No. 117712
GTIN 4015613779195

Cooking basket 110



- Gastronorm: 1/1 GN
- Size basket: W 490 x D 275 x H 50 mm
- Content: 7 litre(s)
- Material: Stainless steel
- Important information: -
- Size: W 536 x D 326 x H 61 mm
- Weight: 1.1 kg

Code-No. 900300
GTIN 4015613788111

Water filter system K3600L



- Water connection: 3/8"
- Water pressure: 3 bar
- Colour: White
- Water intake temperature from: 2 °C
- Water intake temperature to: 30 °C

Code-No. 109847
GTIN 4015613743899