

## Combi steamer Silversteam-K 6110D



- ▶ Up to 6 x 1/1 GN
- ▶ Electronic control with 600 programs, each program with up to 9 cooking phases



- ▶ Rack control
  - ✓ To enable the selection of a program for each shelf
- ▶ Cooldown during cooking phase



- ▶ Double door glazing, inner door can be opened easily for cleaning
- ▶ Vapour extractor is easy to regulate

### Description

Thanks to the lengthwise shelves, the Silversteam-K 6110D is particularly compact, so perfect for even the smallest of kitchens. With intuitive digital controls, a rack control function and good air circulation, it can be used to steam, poach or bake foods in 1/1 GN containers.

### Features

- Power load: 6.9 kW | 400 V | 50/60 Hz
- Equipment connection: 3 NAC
- Material cooking chamber: CNS 18/10
- Format drawers: 1/1 GN
- Type of drawers: Longitudinal
- Number of drawers: 6
- Distance between trays: 60 mm
- Functions:
  - Circulating air
  - Steam
  - Combi-steaming
  - Low temperature cooking
  - Delta-T cooking
  - Reversing motor direction (fan wheels)
  - Steam production by means of direct injection
  - Cooldown during cooking phase



- ▶ Removable support rails
- ▶ 3 air speed settings

▶ Continue on the next page

## Combi steamer Silversteam-K 6110D



- Cooking mode: Manual
  - One-touch recipe selection
  - Recipe tuner
- Rack control: Yes
- With cleaning system: No
- Number of cooking programs: 300 pre-installed programs  
300 configurable programs
- Number of cooking phases: 9
- Temperature range: 50 °C to 300 °C
- Temperature control: Stepless
- Number of fans: 1
- Fan speed: 3 levels
- Time adjustment: 0 to 599 minutes
- Continuous operation: Yes
- Core temperature sensor connection: Below cooking chamber
- USB connection: Frontal
- Vapour extractor: Yes
- Water connection: 3/4"
- Interior lighting: Yes
- LED display: Steaming  
Delta-T cooking  
Cooking phases  
Core temperature  
Fan speed  
Program  
Temperature  
Time
- Control unit: Touch
- Control lamp: -
- Series: Silversteam-K
- Operating mode: Electro
- Properties: Rounded cooking chamber  
Bearing rails can be detached  
Double-winged door pane  
LED lighting in door
- Including: 1 grid 1/1 GN  
1 tray 1/1 GN  
1 PVC drainpipe  
1 replacement air filter  
1 water supply hose
- Available on request: Combi steamer with door hinge on left
- Material: CNS 18/10
- Important information: From a water hardness of 5° dH upwards, we urgently recommend fitting a suitable water softener and a water pressure of maximum 3 bar
- Size: W 525 x D 880 x H 800 mm
- Weight: 73.6 kg

## Combi steamer Silversteam-K 6110D

### Add on Products

#### GN container, 1/1, D20

CNS  
18/10



- Content: 3.4 litre(s)
- Stackable: Yes
- Design: No perforation
- Reinforced edge: No
- Properties: -
- Surface: High-gloss
- Depth container: 20 mm

Code-No. A121025  
GTIN 4016098166722

#### GN-container, 1/1GN,D100, Basic Line

CNS



- Content: 14 litre(s)
- Stackable: Yes
- Design: No perforation
- Reinforced edge: No
- Surface: Silk matt
- Depth container: 100 mm
- Series: Basic Line

Code-No. 711100  
GTIN 4015613695594

#### GN-container, 1/1GN,D65, Basic Line

CNS



- Content: 9 litre(s)
- Stackable: Yes
- Design: No perforation
- Reinforced edge: No
- Surface: Silk matt
- Depth container: 65 mm
- Series: Basic Line

Code-No. 711065  
GTIN 4015613695587

#### GN-container, 1/1GN,D20, Basic Line

CNS



- Content: 3.4 litre(s)
- Stackable: Yes
- Design: No perforation
- Reinforced edge: No
- Surface: Silk matt
- Depth container: 20 mm
- Series: Basic Line

Code-No. 711020  
GTIN 4015613695556

## Combi steamer Silversteam-K 6110D

### Add on Products

#### Condensation hood Silversteam-K



- Fan regulation: Automatrix, sensor-controlled
- Material filter: Stainless steel
- Lamps (number + watt): -
- Including: Drain hose, 320 mm
- Properties: -
- Assembly type: Top of appliance
- Available on request: -

Code-No. 117002  
GTIN 4015613671031

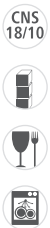
#### Pressure regulator



- Water pressure: 1 - 6 bar (preset to 3 bar)
- Connection: 3/4"
- Operating temperature max.: 65 °C
- Incoming pressure max.: 16 bar
- Material: Brass  
Chrome-plated
- Important information: -

Code-No. 533051  
GTIN 4015613468617

#### GN container, 1/1, D65



- Content: 9 litre(s)
- Stackable: Yes
- Design: No perforation
- Reinforced edge: No
- Properties: -
- Surface: High-gloss
- Depth container: 65 mm

Code-No. A121065  
GTIN 4016098162755

#### Hand shower f. combi steamer



- Water connection: 1/2"
- Length hose: 2 m
- Properties: Shutoff valve for fixed connection to water supply 1/2"
- Including: 1 holder
- Material: Plastic  
Metal

Code-No. 116005  
GTIN 4015613587189

## Combi steamer Silversteam-K 6110D

### Add on Products

#### Connection kit Silversteam-K

STAINLESS STEEL



- Designed for: Electric 1/1 GN combi-steamers from the Silversteam series-K and Bartscher Kompakt
- Combination possibilities: 6 x 1/1 GN to 6 x 1/1 GN  
6 x 1/1 GN to 10 x 1/1 GN
- Size frame: W 525 x D 735 x H 75 mm

Code-No. 117100  
GTIN 4015613632452

#### Core temperature sensor set 3KA

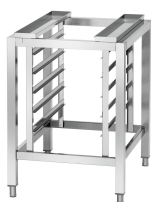


- Set comprises: 1 holder  
1 core temperature sensor
- Designed for: Electric combi-steamers from the Silversteam series-K
- Material temperature sensor: Chrome-nickel steel
- Puncture depth: 80 mm
- Diameter temperature sensor: 3 mm

Code-No. 116111  
GTIN 4015613818047

#### Base unit Silversteam-K

CNS



- Number of drawers: 5
- Format drawers: 1/1 GN
- Type of drawers: Longitudinal
- Height adjustable: 735 mm to 780 mm
- Colour: Silver
- Designed for: 1/1 GN combi-steamers Silversteam-K series
- Base shelf: No

Code-No. 115076  
GTIN 4015613627090

#### Baking tray 1/1-AL



- Gastronorm: 1/1 GN
- Perforation: No
- Material thickness: 1.5 mm
- Edge: 4 sides, cover
- Silicone coating: No
- Temperature resistant to: 260 °C
- Material: Aluminium

Code-No. 100426  
GTIN 4015613734743

## Combi steamer Silversteam-K 6110D

### Add on Products

#### Intensive power cleaner F1L



- Order quantity unit: 1 box (6 bottles)

Code-No. 173280  
GTIN 4015613773353

#### Power cleaner F1L



- Order quantity unit: 1 box (6 bottles)
- Designed for: Manual cleaning of heavily soiled surfaces  
Grill, oven and combi steamer cleaning (without cleaning system)  
Cookers, extractor hoods, tilting frying pans etc.
- Content: 6 x 1 litre

Code-No. 173278  
GTIN 4015613773346

#### GN container, 1/1, D100

CNS  
18/10



- Content: 14 litre(s)
- Stackable: Yes
- Design: No perforation
- Reinforced edge: No
- Properties: -
- Surface: High-gloss
- Depth container: 100 mm

Code-No. A121100  
GTIN 4016098162762

#### Cooking basket 110

STAINLESS  
STEEL



- Gastronorm: 1/1 GN
- Size basket: W 490 x D 275 x H 50 mm
- Content: 7 litre(s)
- Material: Stainless steel
- Important information: -
- Size: W 536 x D 326 x H 61 mm
- Weight: 1.1 kg

Code-No. 900300  
GTIN 4015613788111

## Combi steamer Silversteam-K 6110D

### Add on Products

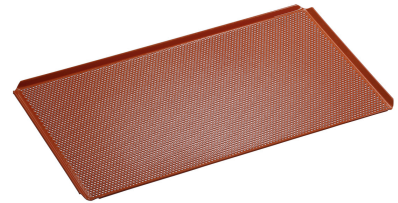
#### Smoker-Box 1160



- Model: With heating coil
- Designed for: Combined steamer
- Comprising: Mains adapter  
Smoker-Box
- Volume: 1.16 litre(s)
- Dimensions Smoker-Box: W 125 x D 470 x H 75 mm
- Suitable fuel: Standard smoker materials

Code-No. 117712  
GTIN 4015613779195

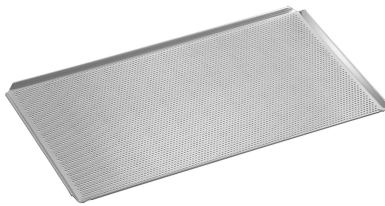
#### Perforated tray 1/1-SI



- Diameter perforation: 3 mm
- Gastronorm: 1/1 GN
- Perforation: Yes
- Material thickness: 1.5 mm
- Edge: 4 sides, cover
- Silicone coating: Yes
- Temperature resistant to: 260 °C

Code-No. 100428  
GTIN 4015613734767

#### Perforated tray 1/1-AL



- Diameter perforation: 3 mm
- Gastronorm: 1/1 GN
- Perforation: Yes
- Material thickness: 1.5 mm
- Edge: 4 sides, cover
- Silicone coating: No
- Temperature resistant to: 260 °C

Code-No. 100427  
GTIN 4015613734750

#### Water filter system K3600L



- Water connection: 3/8"
- Water pressure: 3 bar
- Colour: White
- Water intake temperature from: 2 °C
- Water intake temperature to: 30 °C

Code-No. 109847  
GTIN 4015613743899