

## Combi steamer Silversteam2 5110D



### Description

The ideal partner for every kitchen: A Bartscher Silversteam2 combi steamer with five 1/1 GN inserts. With or without a core temperature sensor, the electronic controls enable the demand-based regulation of all cooking processes. The rack control function allows different foods to be prepared at different times. The Silversteam2 takes a weight off your shoulders and keeps an eye on everything for you.

### Features

- Power load: 6.3 kW | 400 V | 50 Hz
- Equipment connection: 3 NAC
- Material cooking chamber: CNS 18/10
- Format drawers: 1/1 GN
- Type of drawers: 600 x 400 mm
- Number of drawers: Crosswise
- Distance between trays: 5
- Functions: 74 mm
- Functions: Steam production by means of direct injection
- Functions: Steam
- Functions: Delta-T cooking
- Functions: Combi-steaming
- Functions: Low temperature cooking
- Functions: Reversing motor direction (fan wheels)
- Functions: Circulating air
- Functions: Cooldown during cooking phase
- Functions: Manual steaming

▶ Continue on the next page



- ▶ Up to 5 x 1/1 GN
- ▶ Electronic control with 600 programs (300 preinstalled, 300 programmable); up to 9 cooking phases per program



- ▶ Rack control
  - ✓ To enable the selection of a program for each shelf
- ▶ Cooldown during cooking phase



- ▶ Double door glazing, inner door can be opened easily for cleaning
- ▶ Vapour extractor is easy to regulate



- ▶ Removable support rails

## Combi steamer Silversteam2 5110D

• Cooking mode:	Manual One-touch recipe selection Recipe tuner
• Rack control:	Yes
• With cleaning system:	No
• Number of cooking programs:	300 pre-installed programs 300 configurable programs
• Number of cooking phases:	9
• Temperature range:	50 °C to 300 °C
• Temperature control:	In 1 °C steps
• Number of fans:	1
• Fan speed:	3 levels
• Time adjustment:	0 to 5999 minutes
• Continuous operation:	Yes
• Core temperature sensor connection:	Front, bottom
• USB connection:	Front, bottom
• Vapour extractor:	Yes
• Water connection:	3/4"
• Interior lighting:	Yes
• LED display:	Steaming Delta-T cooking Cooking phases Core temperature Fan speed Program Temperature Time Touch
• Control unit:	Touch
• Control lamp:	-
• Series:	Silversteam2
• Operating mode:	Electro
• Properties:	Rounded cooking chamber Bearing rails can be detached Double-winged door pane LED lighting in door Socket (500 W) for connection of an extractor hood
• Including:	1 grid 1/1 GN 1 tray 1/1 GN 1 water supply hose
• Available on request:	-
• Material:	CNS 18/10
• Important information:	From a water hardness of 5° dH upwards, we urgently recommend fitting a suitable water softener and a water pressure of maximum 3 bar
• Size:	W 905 x D 840 x H 680 mm
• Weight:	89 kg



## Combi steamer Silversteam2 5110D

### Add on Products

#### Baking tray 1/1-AL



- Gastronorm: 1/1 GN
- Perforation: No
- Material thickness: 1.5 mm
- Edge: 4 sides, cover
- Silicone coating: No
- Temperature resistant to: 260 °C
- Material: Aluminium

Code-No. 100426  
GTIN 4015613734743

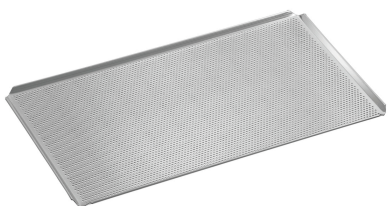
#### Intensive power cleaner F1L



- Order quantity unit: 1 box (6 bottles)

Code-No. 173280  
GTIN 4015613773353

#### Perforated tray 1/1-AL



- Diameter perforation: 3 mm
- Gastronorm: 1/1 GN
- Perforation: Yes
- Material thickness: 1.5 mm
- Edge: 4 sides, cover
- Silicone coating: No
- Temperature resistant to: 260 °C

Code-No. 100427  
GTIN 4015613734750

#### Baking tray 600x400-ALB



- Bakery norm: 600 x 400 mm
- Perforation: No
- Material thickness: 2 mm
- Edge: 4 sides
- Silicone coating: No
- Temperature resistant to: 280 °C

Code-No. 100439  
GTIN 4015613863511

## Combi steamer Silversteam2 5110D

### Add on Products

#### Pump set f. combi steamer



- Set comprises:
  - 1 plastic canister (5 litres)
  - 1 pump
  - 1 supply hose: canister - pump (150 cm)
  - 1 supply hose: pump - steaming pipe (80 cm)
  - Installation material
- Material:
  - Plastic
  - Metal

Code-No. 116011  
GTIN 4015613595146

#### Grill plate 5300



- Gastronorm: 1/1 GN
- Roasting surface design: Diamond patterned
- With juice groove: Yes
- Material: Cast aluminium
- Important information: -
- Size: W 530 x D 325 x H 15 mm
- Weight: 2.8 kg

Code-No. 106576  
GTIN 4015613660783

#### Water filter system K3600L



- Water connection: 3/8"
- Water pressure: 3 bar
- Colour: White
- Water intake temperature from: 2 °C
- Water intake temperature to: 30 °C

Code-No. 109847  
GTIN 4015613743899

#### Pressure regulator



- Water pressure: 1 - 6 bar (preset to 3 bar)
- Connection: 3/4"
- Operating temperature max.: 65 °C
- Incoming pressure max.: 16 bar
- Material: Brass  
Chrome-plated
- Important information: -

Code-No. 533051  
GTIN 4015613468617

## Combi steamer Silversteam2 5110D

### Add on Products

#### Cooking pergament 1/1 GN



- Order quantity unit: 1 box (500 sheets)
- GN-capable: Yes
- Format per sheet: 1/1 GN, W 530 x D 325 mm
- Heat resistant to: 220 °C
- Material: Paper
- Important information: -
- Size: W 530 x D 325 x H 1 mm

Code-No. 150687  
GTIN 4015613711423

#### GN-container, 1/1GN,D65, Basic Line

CNS



- Content: 9 litre(s)
- Stackable: Yes
- Design: No perforation
- Reinforced edge: No
- Surface: Silk matt
- Depth container: 65 mm
- Series: Basic Line

Code-No. 711065  
GTIN 4015613695587

#### GN container, 1/1, D65

CNS  
18/10



- Content: 9 litre(s)
- Stackable: Yes
- Design: No perforation
- Reinforced edge: No
- Properties: -
- Surface: High-gloss
- Depth container: 65 mm

Code-No. A121065  
GTIN 4016098162755

#### Extractor hood Silversteam2



STAINLESS  
STEEL



- Number of fan motors/exhaust air outputs: 1
- Fan regulation: Toggle  
Manual  
Stepless
- Motor output: 383 W
- ON/OFF switch: Yes

Code-No. 116116  
GTIN 4015613866710

## Combi steamer Silversteam2 5110D

### Add on Products

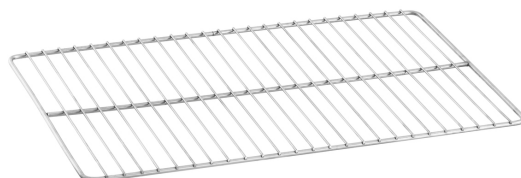
#### BBQ Gloves 425



Code-No. A500514  
GTIN 4015613822433

#### GN grid 1/1, SS

CNS  
18/10



- Series: Top Line
- Norm: EN 631
- Gastronorm: 1/1 GN
- Material: CNS 18/10
- Important information: -
- Size: W 325 x D 530 x H 10 mm
- Weight: 0.94 kg

Code-No. A101091  
GTIN 4016098175250

#### Power cleaner F1L



- Order quantity unit: 1 box (6 bottles)
- Designed for: Manual cleaning of heavily soiled surfaces  
Grill, oven and combi steamer cleaning (without cleaning system)  
Cookers, extractor hoods, tilting frying pans etc.
- Content: 6 x 1 litre

Code-No. 173278  
GTIN 4015613773346

#### Core temperature sensor set SST2-D4P



- Set comprises: 1 holder  
1 core temperature sensor
- Designed for: Digital electric combi-steamers from the Silversteam2 series
- Material temperature sensor: Chrome-nickel steel
- Puncture depth: 90 mm
- Diameter temperature sensor: 4 mm

Code-No. 116113  
GTIN 4015613877747

## Combi steamer Silversteam2 5110D

### Add on Products

#### Guiding rails 6040 SST2-5110



- Designed for: 5 x 1/1 GN combi-steamers in the Silversteam2 series
- Format drawers: 600 x 400 mm
- Distance between trays: 90 mm
- Number of drawers: 4
- Material: CNS 18/10
- Important information: -

Code-No. 117151  
GTIN 4015613866666

#### Base unit Silversteam 110

CNS  
18/10



- Number of drawers: 10
- Format drawers: 1/1 GN
- Type of drawers: Longitudinal
- Height adjustable: 741 mm to 790 mm
- Colour: Silver
- Designed for: 1/1 GN combi-steamers Silversteam2 series  
1/1 GN combi-steamers Silversteam series

Code-No. 115069  
GTIN 4015613602486

#### Base unit Silversteam 2-110

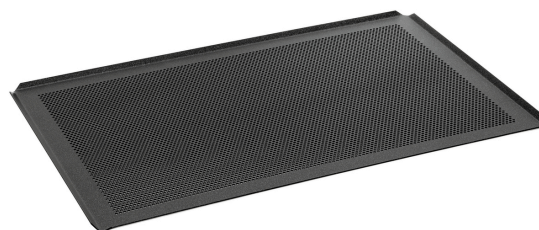
CNS



- Number of drawers: 6
- Format drawers: 1/1 GN
- Type of drawers: Longitudinal
- Height adjustable: 400 mm to 450 mm
- Colour: Silver
- Designed for: 1/1 GN combi-steamers Silversteam2 series  
1/1 GN combi-steamers Silversteam series

Code-No. 115071  
GTIN 4015613617589

#### Perforated tray 600x400-ALB



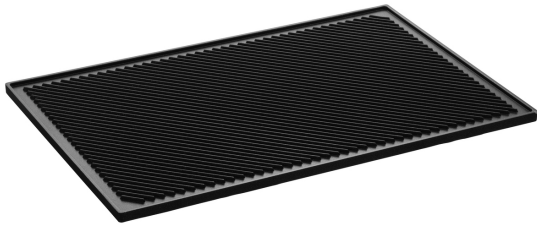
- Diameter perforation: 3 mm
- Bakery norm: 600 x 400 mm
- Perforation: Yes
- Material thickness: 2 mm
- Edge: 4 sides
- Silicone coating: No
- Temperature resistant to: 280 °C

Code-No. 100438  
GTIN 4015613863504

## Combi steamer Silversteam2 5110D

### Add on Products

#### Grill plate EGR60400



- Properties: Useable on both sides
- Model: Rectangular  
1 side grooved  
1 side smooth
- Material: Cast aluminium  
Coated
- Important information: -

Code-No. 100437  
GTIN 4015613863481

#### Smoker-Box 1160



- Model: With heating coil
- Designed for: Combined steamer
- Comprising: Mains adapter  
Smoker-Box
- Volume: 1.16 litre(s)
- Dimensions Smoker-Box: W 125 x D 470 x H 75 mm
- Suitable fuel: Standard smoker materials

Code-No. 117712  
GTIN 4015613779195

#### Tray 1/1GN, 20 mm



- Content: 3.5 litre(s)
- Stackable: Yes
- Design: No perforation
- Reinforced edge: Yes
- Properties: -
- Surface: Silk matt
- Depth container: 20 mm

Code-No. A101185  
GTIN 4015613271729

#### GN-container, 1/1GN,D20, Basic Line



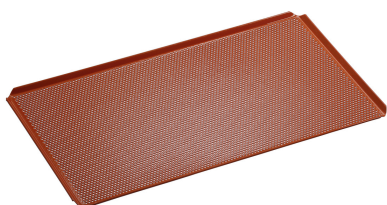
- Content: 3.4 litre(s)
- Stackable: Yes
- Design: No perforation
- Reinforced edge: No
- Surface: Silk matt
- Depth container: 20 mm
- Series: Basic Line

Code-No. 711020  
GTIN 4015613695556

## Combi steamer Silversteam2 5110D

### Add on Products

#### Perforated tray 1/1-SI



- Diameter perforation: 3 mm
- Gastronorm: 1/1 GN
- Perforation: Yes
- Material thickness: 1.5 mm
- Edge: 4 sides, cover
- Silicone coating: Yes
- Temperature resistant to: 260 °C

Code-No. 100428  
GTIN 4015613734767

#### GN-container, 1/1GN,D100, Basic Line



- Content: 14 litre(s)
- Stackable: Yes
- Design: No perforation
- Reinforced edge: No
- Surface: Silk matt
- Depth container: 100 mm
- Series: Basic Line

Code-No. 711100  
GTIN 4015613695594

#### Cooking basket 110



- Gastronorm: 1/1 GN
- Size basket: W 490 x D 275 x H 50 mm
- Content: 7 litre(s)
- Material: Stainless steel
- Important information: -
- Size: W 536 x D 326 x H 61 mm
- Weight: 1.1 kg

Code-No. 900300  
GTIN 4015613788111

#### Oven gloves 370



- Properties: With flame protection  
With hanger  
Fabric density: 640 g/m<sup>2</sup>
- Colour: Black
- Can be washed: No
- Heat resistant to: 250 °C
- Length: 370 mm

Code-No. A500511  
GTIN 4015613735474

## Combi steamer Silversteam2 5110D

### Add on Products

#### GN container, 1/1, D20

CNS  
18/10



- Content: 3.4 litre(s)
- Stackable: Yes
- Design: No perforation
- Reinforced edge: No
- Properties: -
- Surface: High-gloss
- Depth container: 20 mm

Code-No. A121025  
GTIN 4016098166722

#### Hand shower f. combi steamer



- Water connection: 1/2"
- Length hose: 2 m
- Properties: Shutoff valve for fixed connection to water supply 1/2"
- Including: 1 holder
- Material: Plastic  
Metal

Code-No. 116005  
GTIN 4015613587189

#### GN container, 1/1, D200

CNS  
18/10



- Content: 28 litre(s)
- Stackable: Yes
- Design: No perforation
- Reinforced edge: No
- Properties: -
- Surface: High-gloss
- Depth container: 200 mm

Code-No. A121200  
GTIN 4015613271071

#### Condensation hood Silversteam2



- Number of fan motors/exhaust air outputs: 1
- Fan regulation: Toggle  
Manual  
Stepless
- Motor output: 383 W
- ON/OFF switch: Yes

Code-No. 116119  
GTIN 4015613866727

## Combi steamer Silversteam2 5110D

### Add on Products

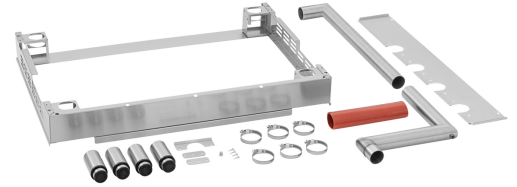
#### Core temperature sensor set SST2-D1P



- Set comprises: 1 holder  
1 core temperature sensor
- Designed for: Digital electric combi-steamers from the Silversteam2 series
- Material temperature sensor: Chrome-nickel steel
- Puncture depth: 80 mm
- Diameter temperature sensor: 3 mm

Code-No. 116109  
GTIN 401561386697

#### Connection kit Silversteam2



- Designed for: Electric 1/1 GN combi-steamers from the Silversteam2 series
- Combination possibilities: 5 x 1/1 GN to 5 x 1/1 GN  
5 x 1/1 GN to 7 x 1/1 GN
- Size frame: W 905 x D 620 x H 115 mm

Code-No. 116112  
GTIN 4015613866703

#### Base unit Silversteam2 6040

CNS  
18/10



- Number of drawers: 10
- Format drawers: 1/1 GN  
600 x 400 mm
- Type of drawers: Longitudinal
- Height adjustable: 740 mm to 790 mm
- Colour: Silver
- Designed for: 1/1 GN combi-steamers Silversteam2 series

Code-No. 115089  
GTIN 401561387730