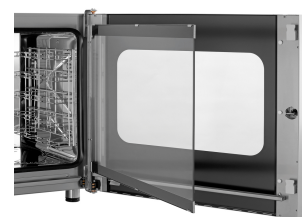


Combi steamer Silversteam2 5110M



- ▶ Up to 5 x 1/1 GN
- ▶ Easy knob control



- ▶ Double door glazing, inner door can be opened easily for cleaning



- ▶ Vapour extractor is easy to regulate



- ▶ Removable support rails



- ▶ 2 air speed settings

Description

The ideal partner for every kitchen: A Bartscher Silversteam2 combi-steamer with five 1/1 GN inserts. For convection cooking, steaming, combi-steaming and low-temperature cooking, the manual controls enable the easy, demand-based regulation of all cooking processes – with or without a core temperature sensor as desired.

Features

- Power load: 6.3 kW | 400 V | 50 Hz
- Equipment connection: 3 NAC
- Material cooking chamber: CNS 18/10
- Format drawers: 1/1 GN
- Type of drawers: 600 x 400 mm
- Number of drawers: Crosswise
- Distance between trays: 5
- Functions: 74 mm
- Functions: Steam production by means of direct injection
- Functions: Steam
- Functions: Combi-steaming
- Functions: Low temperature cooking
- Functions: Reversing motor direction (fan wheels)
- Functions: Circulating air
- Cooking mode: -
- Rack control: No
- With cleaning system: No

▶ Continue on the next page

Combi steamer Silversteam2 5110M

- Number of cooking programs: 1
- Number of cooking phases: 1
- Temperature range: 50 °C to 280 °C
- Temperature control: Stepless
- Number of fans: 1
- Fan speed: 2 levels
- Time adjustment: 0 to 120 minutes
- Continuous operation: Yes
- Core temperature sensor connection: Side
- USB connection: -
- Vapour extractor: Yes
- Water connection: 3/4"
- Interior lighting: Yes
- LED display: Steaming
Core temperature
Temperature
Time
- Control unit: Toggle
- Control lamp: ON/OFF
Temperature
- Series: Silversteam2
- Operating mode: Electro
- Properties: Rounded cooking chamber
Bearing rails can be detached
Double-winged door pane
LED lighting in door
Socket (500 W) for connection of an extractor hood
- Including: 1 grid 1/1 GN
1 tray 1/1 GN
1 water supply hose
- Available on request: -
- Material: CNS 18/10
- Important information: From a water hardness of 5° dH upwards, we urgently recommend fitting a suitable water softener and a water pressure of maximum 3 bar
- Size: W 905 x D 840 x H 680 mm
- Weight: 87 kg



Combi steamer Silversteam2 5110M

Add on Products

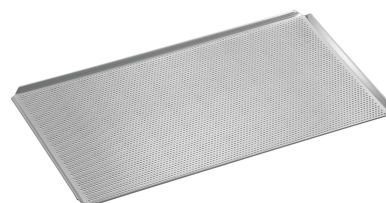
Baking tray 600x400-ALB



- Bakery norm: 600 x 400 mm
- Perforation: No
- Material thickness: 2 mm
- Edge: 4 sides
- Silicone coating: No
- Temperature resistant to: 280 °C

Code-No. 100439
GTIN 4015613863511

Perforated tray 1/1-AL



- Diameter perforation: 3 mm
- Gastronorm: 1/1 GN
- Perforation: Yes
- Material thickness: 1.5 mm
- Edge: 4 sides, cover
- Silicone coating: No
- Temperature resistant to: 260 °C

Code-No. 100427
GTIN 4015613734750

Water filter system K3600L



- Water connection: 3/8"
- Water pressure: 3 bar
- Colour: White
- Water intake temperature from: 2 °C
- Water intake temperature to: 30 °C

Code-No. 109847
GTIN 4015613743899

Pressure regulator



- Water pressure: 1 - 6 bar (preset to 3 bar)
- Connection: 3/4"
- Operating temperature max.: 65 °C
- Incoming pressure max.: 16 bar
- Material: Brass
Chrome-plated
- Important information: -

Code-No. 533051
GTIN 4015613468617

Combi steamer Silversteam2 5110M

Add on Products

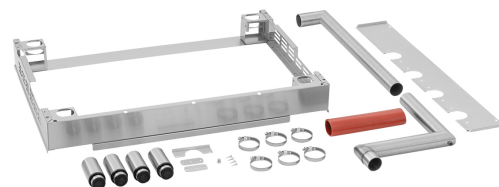
Hand shower f. combi steamer



- Water connection: 1/2"
- Length hose: 2 m
- Properties: Shutoff valve for fixed connection to water supply 1/2"
- Including: 1 holder
- Material: Plastic
Metal

Code-No. 116005
GTIN 4015613587189

Connection kit Silversteam2



- Designed for: Electric 1/1 GN combi-steamers from the Silversteam2 series
- Combination possibilities: 5 x 1/1 GN to 5 x 1/1 GN
5 x 1/1 GN to 7 x 1/1 GN
- Size frame: W 905 x D 620 x H 115 mm

Code-No. 116112
GTIN 4015613866703

Base unit Silversteam 2-110

CNS



- Number of drawers: 6
- Format drawers: 1/1 GN
- Type of drawers: Longitudinal
- Height adjustable: 400 mm to 450 mm
- Colour: Silver
- Designed for: 1/1 GN combi-steamers Silversteam2 series
1/1 GN combi-steamers Silversteam series

Code-No. 115071
GTIN 4015613617589

Base unit Silversteam 110

CNS
18/10



- Number of drawers: 10
- Format drawers: 1/1 GN
- Type of drawers: Longitudinal
- Height adjustable: 741 mm to 790 mm
- Colour: Silver
- Designed for: 1/1 GN combi-steamers Silversteam2 series
1/1 GN combi-steamers Silversteam series

Code-No. 115069
GTIN 4015613602486

Combi steamer Silversteam2 5110M

Add on Products

GN-container, 1/1GN,D20, Basic Line

CNS



- Content: 3.4 litre(s)
- Stackable: Yes
- Design: No perforation
- Reinforced edge: No
- Surface: Silk matt
- Depth container: 20 mm
- Series: Basic Line

Code-No. 711020
GTIN 4015613695556

Cooking basket 110

STAINLESS
STEEL



- Gastronorm: 1/1 GN
- Size basket: W 490 x D 275 x H 50 mm
- Content: 7 litre(s)
- Material: Stainless steel
- Important information: -
- Size: W 536 x D 326 x H 61 mm
- Weight: 1.1 kg

Code-No. 900300
GTIN 4015613788111

GN-container, 1/1GN,D100, Basic Line

CNS



- Content: 14 litre(s)
- Stackable: Yes
- Design: No perforation
- Reinforced edge: No
- Surface: Silk matt
- Depth container: 100 mm
- Series: Basic Line

Code-No. 711100
GTIN 4015613695594

BBQ Gloves 425



Code-No. A500514
GTIN 4015613822433

Combi steamer Silversteam2 5110M

Add on Products

GN container, 1/1, D65

CNS
18/10



- Content: 9 litre(s)
- Stackable: Yes
- Design: No perforation
- Reinforced edge: No
- Properties: -
- Surface: High-gloss
- Depth container: 65 mm

Code-No. A121065
GTIN 4016098162755

Power cleaner F1L

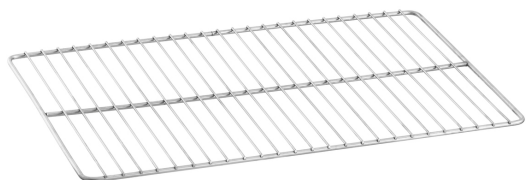


- Order quantity unit: 1 box (6 bottles)
- Designed for: Manual cleaning of heavily soiled surfaces
Grill, oven and combi steamer cleaning (without cleaning system)
Cookers, extractor hoods, tilting frying pans etc.
- Content: 6 x 1 litre

Code-No. 173278
GTIN 4015613773346

GN grid 1/1, SS

CNS
18/10



- Series: Top Line
- Norm: EN 631
- Gastronorm: 1/1 GN
- Material: CNS 18/10
- Important information: -
- Size: W 325 x D 530 x H 10 mm
- Weight: 0.95 kg

Code-No. A101091
GTIN 4016098175250

Condensation hood Silversteam2



- Number of fan motors/exhaust air outputs: 1
- Fan regulation: Toggle
Manual
Stepless
- Motor output: 383 W
- ON/OFF switch: Yes

Code-No. 116119
GTIN 4015613866727

Combi steamer Silversteam2 5110M

Add on Products

Perforated tray 600x400-ALB



- Diameter perforation: 3 mm
- Bakery norm: 600 x 400 mm
- Perforation: Yes
- Material thickness: 2 mm
- Edge: 4 sides
- Silicone coating: No
- Temperature resistant to: 280 °C

Code-No. 100438
GTIN 4015613863504

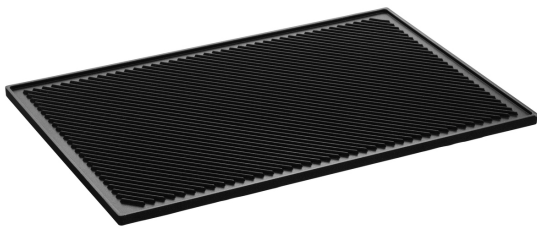
Tray 1/1GN, 20 mm



- Content: 3.5 litre(s)
- Stackable: Yes
- Design: No perforation
- Reinforced edge: Yes
- Properties: -
- Surface: Silk matt
- Depth container: 20 mm

Code-No. A101185
GTIN 4015613271729

Grill plate EGR60400



- Properties: Useable on both sides
- Model: Rectangular
1 side grooved
1 side smooth
- Material: Cast aluminium
Coated
- Important information: -

Code-No. 100437
GTIN 4015613863481

Smoker-Box 1160



- Model: With heating coil
- Designed for: Combined steamer
- Comprising: Mains adapter
Smoker-Box
- Volume: 1.16 litre(s)
- Dimensions Smoker-Box: W 125 x D 470 x H 75 mm
- Suitable fuel: Standard smoker materials

Code-No. 117712
GTIN 4015613779195

Combi steamer Silversteam2 5110M

Add on Products

Perforated tray 1/1-SI



- Diameter perforation: 3 mm
- Gastronorm: 1/1 GN
- Perforation: Yes
- Material thickness: 1.5 mm
- Edge: 4 sides, cover
- Silicone coating: Yes
- Temperature resistant to: 260 °C

Code-No. 100428
GTIN 4015613734767

Guiding rails 6040 SST2-5110



- Designed for: 5 x 1/1 GN combi-steamers in the Silversteam2 series
- Format drawers: 600 x 400 mm
- Distance between trays: 90 mm
- Number of drawers: 4
- Material: CNS 18/10
- Important information: -

Code-No. 117151
GTIN 4015613866666

Core temperature sensor set SST2-M1P

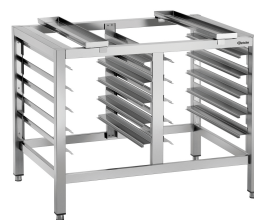


- Set comprises: 1 holder
1 core temperature sensor
- Designed for: Manual electric combi-steamers from the Silversteam2 series
- Material temperature sensor: Chrome-nickel steel
- Puncture depth: 80 mm
- Diameter temperature sensor: 3 mm

Code-No. 116108
GTIN 4015613868523

Base unit Silversteam2 6040

CNS
18/10



- Number of drawers: 10
- Format drawers: 1/1 GN
600 x 400 mm
- Type of drawers: Longitudinal
- Height adjustable: 740 mm to 790 mm
- Colour: Silver
- Designed for: 1/1 GN combi-steamers Silversteam2 series

Code-No. 115089
GTIN 4015613877730

Combi steamer Silversteam2 5110M

Add on Products

Grill plate 5300



- Gastronorm: 1/1 GN
- Roasting surface design: Diamond patterned
- With juice groove: Yes
- Material: Cast aluminium
- Important information: -
- Size: W 530 x D 325 x H 15 mm
- Weight: 2.8 kg

Code-No. 106576
GTIN 4015613660783

GN-container, 1/1GN,D65, Basic Line



- Content: 9 litre(s)
- Stackable: Yes
- Design: No perforation
- Reinforced edge: No
- Surface: Silk matt
- Depth container: 65 mm
- Series: Basic Line

Code-No. 711065
GTIN 4015613695587

Cooking pergament 1/1 GN



- Order quantity unit: 1 box (500 sheets)
- GN-capable: Yes
- Format per sheet: 1/1 GN, W 530 x D 325 mm
- Heat resistant to: 220 °C
- Material: Paper
- Important information: -
- Size: W 530 x D 325 x H 1 mm

Code-No. 150687
GTIN 4015613711423

GN container, 1/1, D20



- Content: 3.4 litre(s)
- Stackable: Yes
- Design: No perforation
- Reinforced edge: No
- Properties: -
- Surface: High-gloss
- Depth container: 20 mm

Code-No. A121025
GTIN 4016098166722

Combi steamer Silversteam2 5110M

Add on Products

Oven gloves 370



- Properties: With flame protection
With hanger
Fabric density: 640 g/m²
- Colour: Black
- Can be washed: No
- Heat resistant to: 250 °C
- Length: 370 mm

Code-No. A500511
GTIN 4015613735474

Pump set f. combi steamer



- Set comprises: 1 plastic canister (5 litres)
1 pump
1 supply hose: canister - pump (150 cm)
1 supply hose: pump - steaming pipe (80 cm)
Installation material
- Material: Plastic
Metal

Code-No. 116011
GTIN 4015613595146

GN container, 1/1, D200

CNS
18/10



- Content: 28 litre(s)
- Stackable: Yes
- Design: No perforation
- Reinforced edge: No
- Properties: -
- Surface: High-gloss
- Depth container: 200 mm

Code-No. A121200
GTIN 4015613271071

Intensive power cleaner F1L



- Order quantity unit: 1 box (6 bottles)

Code-No. 173280
GTIN 4015613773353

Combi steamer Silversteam2 5110M

Add on Products

Extractor hood Silversteam2



- Number of fan motors/exhaust air outputs: 1
- Fan regulation: Toggle
Manual
Stepless
- Motor output: 383 W
- ON/OFF switch: Yes

Code-No. 116116
GTIN 4015613866710

Baking tray 1/1-AL



- Gastronorm: 1/1 GN
- Perforation: No
- Material thickness: 1.5 mm
- Edge: 4 sides, cover
- Silicone coating: No
- Temperature resistant to: 260 °C
- Material: Aluminium

Code-No. 100426
GTIN 4015613734743