

## Gas stove, 6BRs,el. oven,2/1GN NS



- ▶ 6 hobs
- ✓ 1 x 3.5 kW
- ✓ 2 x 5 kW
- ✓ 3 x 8 kW



- ▶ Electrical oven
  - ✓ Output: 5.6 kW
  - ✓ Format: 2/1 GN
  - ✓ Dimensions: W 655 x D 550 x H 300 mm
- ▶ Neutral cabinet
  - ✓ Dimensions: W 345 x D 835 x H 470 mm

### Description

The 900 Master series and its high-quality and solid stainless steel version in CNS 18/10 is the ideal choice for modern professional kitchens with high standards. First-rate, flexible and high-performance.

### Features

- Connected load oven: 5,6 kW | 400 V | 3 NAC
- Frequency: 50/60 Hz
- Sub-counter unit type: Leaf door
- Size base unit: W 345 x D 835 x H 470 mm
- Oven type: Electro
- Temperature range: 70 °C to 300 °C
- Size oven: W 655 x D 550 x H 300 mm
- Gastronorm: 2/1 GN
- Height adjustable: 900 mm to 950 mm
- Gas type: Natural gas H (20 mbar)  
Liquid gas (50 mbar) and natural gas nozzles L (20 mbar) are enclosed
- Gas burner: Two-circle burner
- Ignition type: Manual ignition
- Series: 900
- Type of hobs: Gas
- Number of hobs: 6
- Distribution of hobs: 1 x 3,5 kW, 2 x 5 kW, 3 x 8 kW

▶ Continue on the next page



- ▶ Optimum performance by means of a two-circle hob



- ▶ Easy cleaning
  - ✓ Hobs with removable collection tray
- ▶ Simple operation: very large toggles with a good grip and legible labels

## Gas stove, 6BRs,el. oven,2/1GN NS

- Type: Upright unit
- Operating mode: Electro / gas
- Height-adjustable feet: Yes
- Properties: Hobs with removable collection tray
- Including: -
- Power: 37.5 kW
- Material: CNS 18/10
- Important information: -
- Size: W 1,200 x D 900 x H 900 mm
- Weight: 186.6 kg



## Gas stove, 6BRs,el. oven,2/1GN NS

### Add on Products

#### Tray 2/1GN, 65 mm

CNS  
18/10



- Content: 18.5 litre(s)
- Stackable: Yes
- Design: No perforation
- Reinforced edge: Yes
- Properties: -
- Surface: Silk matt
- Depth container: 65 mm

Code-No. A101183  
GTIN 4015613271712

#### Thermometer D3000 KTP

STAINLESS  
STEEL



- Control unit: Electronic
- Material temperature sensor: Stainless steel
- Puncture depth: 120 mm
- Diameter temperature sensor: 3.8 mm
- Design: Digital
- Size of display field: W 22 x H 10 mm
- With temperature sensor: Yes

Code-No. 293043  
GTIN 4015613664255

#### Oven gloves 300



- Properties: With flame protection  
With hanger  
Fabric density: 640 g/m<sup>2</sup>
- Colour: Black
- Can be washed: No
- Heat resistant to: 250 °C
- Length: 300 mm

Code-No. A500510  
GTIN 4015613735467

#### Oven gloves 370



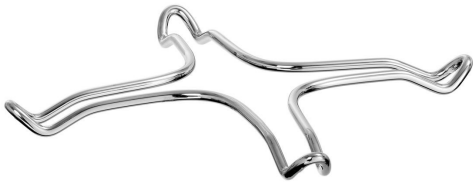
- Properties: With flame protection  
With hanger  
Fabric density: 640 g/m<sup>2</sup>
- Colour: Black
- Can be washed: No
- Heat resistant to: 250 °C
- Length: 370 mm

Code-No. A500511  
GTIN 4015613735474

## Gas stove, 6BRs,el. oven,2/1GN NS

### Add on Products

#### Support ring for small pots



- Important information: -
- Size: W 260 x D 260 x H 18 mm
- Weight: 0.3 kg

Code-No. 296086  
GTIN 4015613676906

#### Swivel castors 4S900



- Swivel castors: 4 swivel castors, 2 with brake
- Diameter castors: 125 mm
- Load-bearing capacity max., each: 100 kg
- Material: Plastic  
Rubber coated
- Important information: -

Code-No. 295088  
GTIN 4015613680804

#### Tray 2/1GN, 20 mm

CNS  
18/10



- Content: 6.9 litre(s)
- Stackable: Yes
- Design: No perforation
- Reinforced edge: Yes
- Properties: -
- Surface: Silk matt
- Depth container: 20 mm

Code-No. A101181  
GTIN 4015613271699

#### Tray 2/1GN, 40 mm

CNS  
18/10



- Content: 10 litre(s)
- Stackable: Yes
- Design: No perforation
- Reinforced edge: Yes
- Properties: -
- Surface: Silk matt
- Depth container: 40 mm

Code-No. A101182  
GTIN 4015613271705

## Gas stove, 6BRs,el. oven,2/1GN NS

### Add on Products

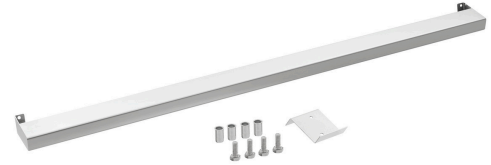
#### Oven gloves 600



- Properties: With flame protection  
With hanger  
Fabric density: 640 g/m<sup>2</sup>
- Colour: Black
- Can be washed: No
- Heat resistant to: 250 °C
- Length: 600 mm

Code-No. A500513  
GTIN 4015613735498

#### Kitchen rail 900-1200



- Load-bearing capacity max.: 15 kg
- Depth of surface: 60 mm
- Including: 1 drilling template  
Attachment material  
Building kit
- Important information: Stainless steel
- Material: Stainless steel
- Size: W 1,190 x D 95 x H 40 mm

Code-No. 295203  
GTIN 4015613850283

#### Oven gloves 420



- Properties: With flame protection  
With hanger  
Fabric density: 640 g/m<sup>2</sup>
- Colour: Black
- Can be washed: No
- Heat resistant to: 250 °C
- Length: 420 mm

Code-No. A500512  
GTIN 4015613735481

#### Grill plate 900-R



- Roasting surface design: Ribbed
- With juice groove: Yes
- Material: Cast iron
- Important information: -
- Size: W 390 x D 390 x H 17 mm
- Weight: 10.6 kg

Code-No. 296051  
GTIN 4015613676920

Gas stove, 6BRs,el. oven,2/1GN NS  
**Add on Products**

**Frying plate 900-G**



- Roasting surface design: Smooth
- With juice groove: Yes
- Material: Cast iron
- Important information: -
- Size: W 390 x D 390 x H 19 mm
- Weight: 10.8 kg

Code-No. 296056  
GTIN 4015613676937